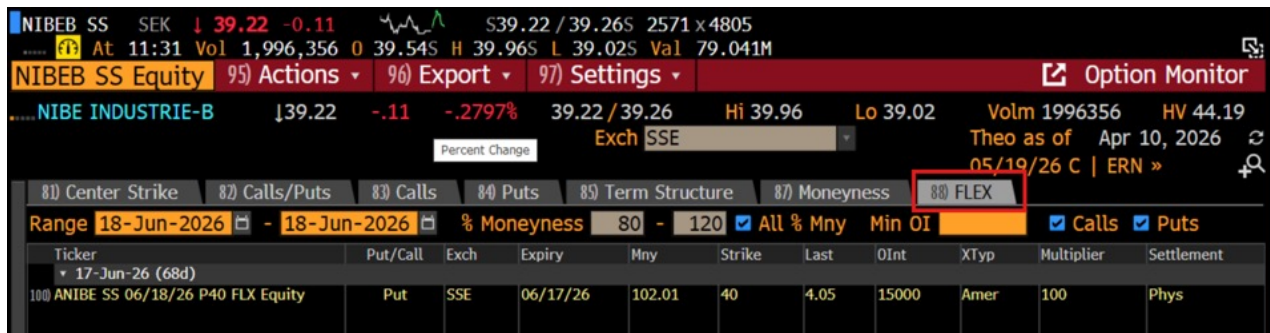


How to Find Flex Contracts in BBG

If the underlying has standardized options listed, Functions OMON and FLEX are visible on the last page showing parameters and OI:



If the underlying doesn't have standardized options listed, you can find Flex Options with one of the following methods:

Example: the Flexible Option NIBE Jun26 40p (American) appears as **ANIBE 6 P40**, whereas the standard contract is displayed as **NIBEB 6 P40**.

METHOD A

To identify Flexible Options, Bloomberg uses an "A" (American) or "E" (European) prefix before the underlying ticker.



METHOD B

1. Run function SECF
2. Type Underlying
3. Type Flex under Description
4. Run function DES for information (Strike, Expiration, Contract size, Settlement type)



For any questions, get in touch with:

Magnus Ericsson, Thomas Schleusener or Erik Staaf at Nasdaq Exchange Brokers Desk on BBG

